

Ensure all your clocks are set to the same time.



UnityTime

- Easy-to-use Windows program
- Set to official national time
- Synchronize Unity Network® activity
- One year warranty
- Unlimited technical support

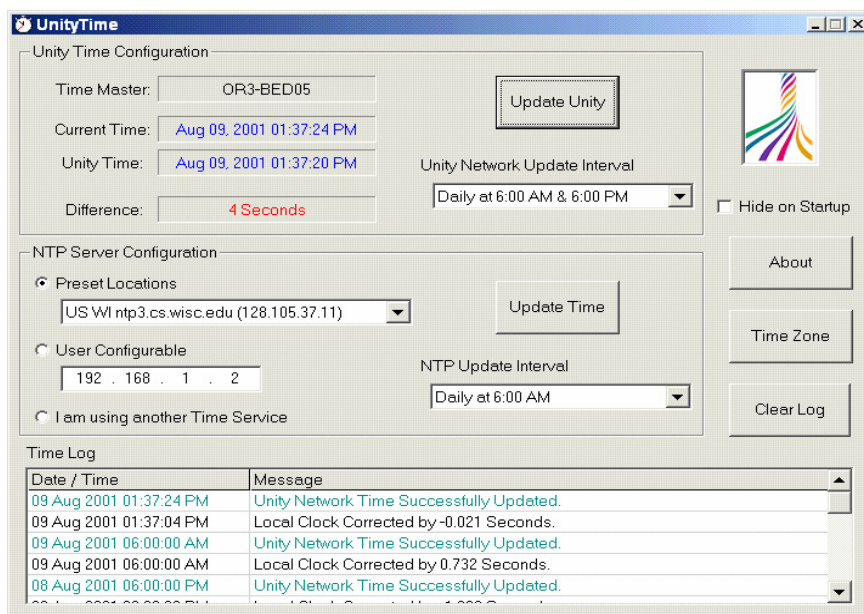
UnityTime Software by Excel Medical Electronics

One of the dilemmas clinicians have is the inability to synchronize the time of day within a networked patient monitoring environment. Computer clocks tend to drift over time and temperature, and vendors typically have a proprietary protocol for communication within their own networked devices. Access to this network often requires time-consuming manual tasks using vendor-supplied software.

The UnityTime software program, developed by Excel Medical Electronics, allows access to the networked monitoring devices in a GE Medical Systems Information Technologies Unity Network. With its easy-to-use interface, UnityTime allows the user to communicate with the Unity Network's Time Master and synchronize the time on the Unity Network.

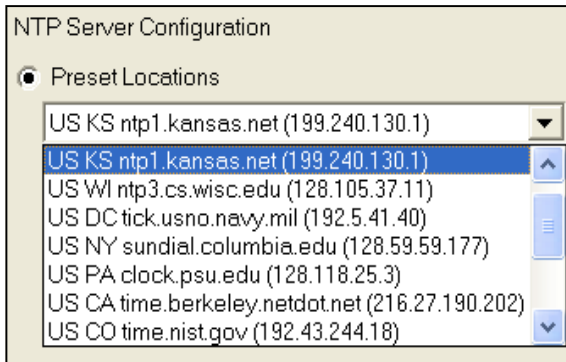
UnityTime offers convenience and flexibility in accessing the Unity Network's Time Master such as an Eagle®, Solar®, Dash®, RAMs, Octa-Comm®, ApexPro telemetry, TramScope, or other Unity Network device.

As an option, UnityTime can use a Network Time Protocol (NTP) server to update its own system clock. NTP is a protocol that accurately synchronizes the time on computers around the world.

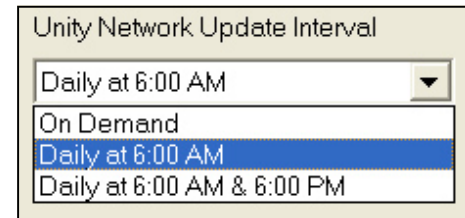


System Requirements:

- Microsoft® Windows 95, Windows 98, Windows NT 4.0, Windows 2000 or Windows XP
- 133 MHz Pentium® class processor
- 100 Mb available hard drive space
- 32 Mb RAM
- One network interface (two recommended)



Preset NTP server configuration



Unity Network update configuration

Other Products by Excel Medical:

BedMaster - Patient vital signs data logging.

BedMasterEx - Comprehensive patient database for vital signs, patient alarms, and waveform logging, and report generation.

Alarm Master - Records and generates reports from all alarms from Unity Network patient monitoring devices.

CathCenter - Interfaces to third-party catheterization hemodynamic monitoring systems with HL7 and XML support.

i.Server X-ray - Interfaces between catheterization hemodynamic monitoring and X-ray systems.

i.Server DICOM® - Interfaces to catheterization hemodynamic monitoring systems using a DICOM Modality Worklist.

Visit our website at www.excel-medical.com for free demonstration programs and operator manuals.

Excel Medical Electronics, Inc.

801 Maplewood Dr., Suite 26
Jupiter, FL 33458
Phone: 561-743-4380
Fax: 561-748-8889
sales@excel-medical.com
www.excel-medical.com

©2004 Excel Medical Electronics, Inc.
All rights reserved.
Design and specifications are subject to change without notice.

SA-03000-004